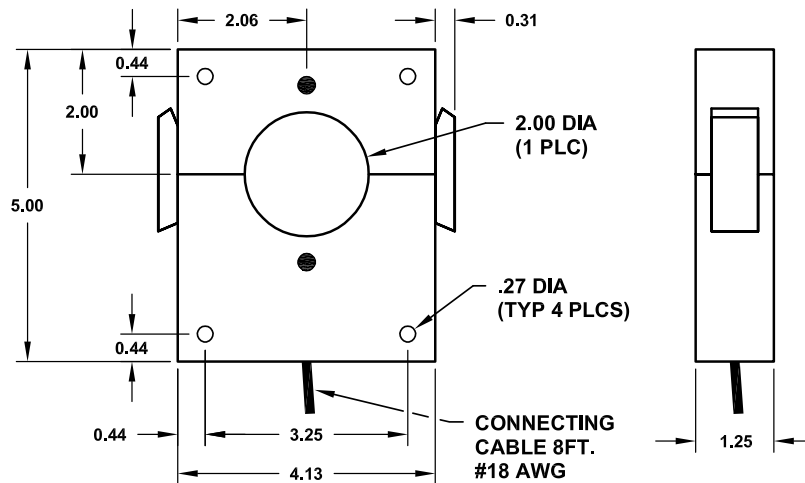


OSI INTRINSICALLY-SAFE CURRENT TRANSDUCER MODEL ISC-xxx

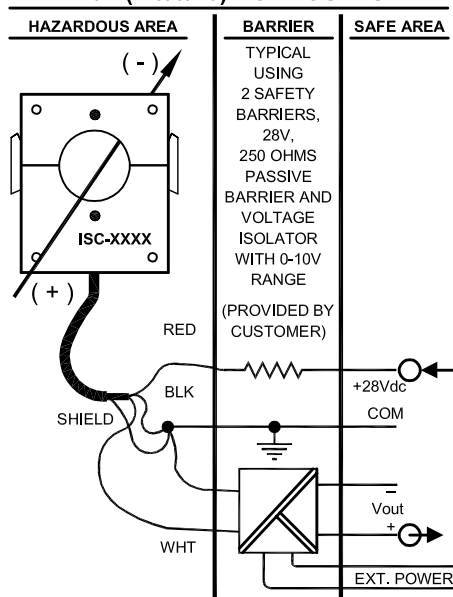
CASE DIMENSIONS



NOTE: ALL DIMENSIONS IN INCHES.

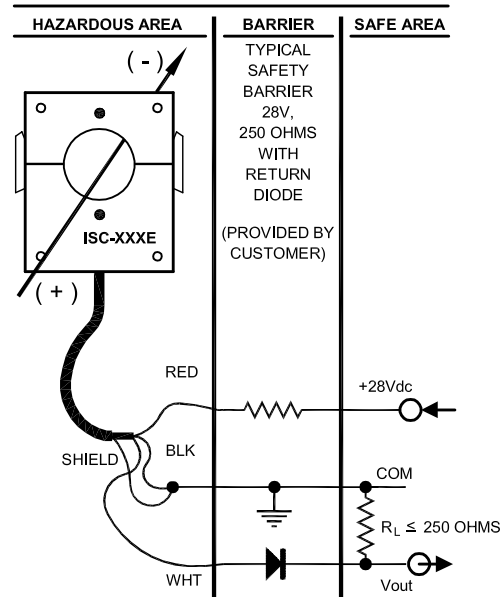
CONNECTION DIAGRAMS

TYPICAL CONNECTION WITH 0 - (2.9/5/10) VOLT OUTPUT



Supply: Red (+), Black
 U_i , V_{max} : 30Vdc
 I_i , I_{max} : 36mA
 P_i , P_{max} : 1.1W
 C_i : 0 μ F
 L_i : 0mH

TYPICAL CONNECTION WITH 4-20mA OUTPUT



Signal: White (+), Black
 U_i , V_{max} : 10Vdc
 I_i , I_{max} : 29mA
 P_i , P_{max} : 0.21W
 C_i : 60nF
 L_i : 0mH

WARNING:

1. Do Not use in environments where ethers are present.
2. Clean only with a damp cloth to prevent the possibility of electric discharge.

Reference also Control Drawing B901-226

LTR	DESCRIPTION	DATE	APPROVED
A	CHANGE NOTE 1, ADD "UJ", "TP", AND "P" SPEC	09/03/04	BAF

NOTE:

- ENTITY PARAMETERS FOR SUPPLY:**

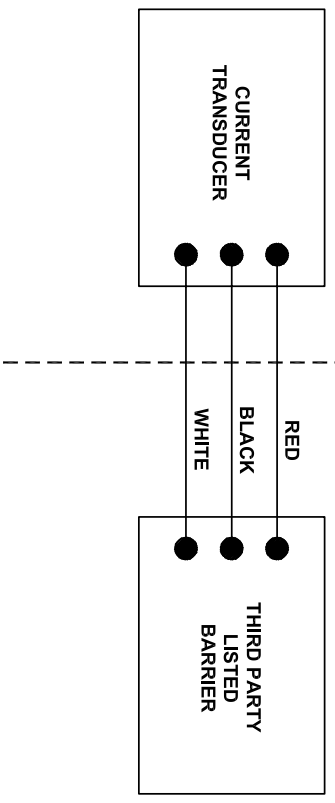
U _i , V _{max}	= 30 Vdc	U _i , V _{max}	= 10 Vdc
I _i , I _{max}	= 36 mA	I _i , I _{max}	= 29 mA
P _i , P _{max}	= 1.1 W	P _i , P _{max}	= 0.21 W
C _i	= 0 uF	C _i	= 60 nF
L _i	= 0 mH	L _i	= 0 mH
- SELECTED BARRIERS MUST BE THIRD PARTY APPROVED AS INTRINSICALLY SAFE FOR THE APPLICATION AND HAVE V_{oc} NOT EXCEEDING V_{max}. SEE NOTE 5.
- CABLE CAPACITANCE (C_c) PLUS INTRINSICALLY SAFE EQUIPMENT CAPACITANCE (C_i) MUST BE LESS THAN THE MARKED CAPACITANCE (C_a). CABLE INDUCTANCE (L_c) PLUS INTRINSICALLY SAFE EQUIPMENT INDUCTANCE (L_i) MUST BE LESS THAN THE MARKED INDUCTANCE (L_a) SHOWN ON THE BARRIER. SEE NOTE 5.
- IF THE ELECTRICAL PARAMETERS OF THE CABLE ARE UNKNOWN, THE FOLLOWING VALUES MAY BE USED:

CAPACITANCE (C _c)	60 pF/FT
INDUCTANCE (L _c)	0.20 uH/FT
- INTRINSICALLY SAFE EQUIPMENT:

V _{max}	>=	V _{oc}
I _{max}	>=	I _{sc}
C _i + C _c	<=	C _a
L _i + L _c	<=	L _a
- WHERE MULTIPLE CIRCUITS EXTEND FROM THE SAME PIECE OF INTRINSICALLY SAFE EQUIPMENT TO ASSOCIATED APPARATUS, THEY MUST BE INSTALLED IN SEPARATE CABLES OR IN ONE CABLE WHICH HAS SUITABLE INSULATION.
- BARRIERS MUST BE INSTALLED IN ACCORDANCE WITH BARRIER MANUFACTURER'S CONTROL DRAWING AND ARTICLE 504 OF THE NATIONAL ELECTRIC CODE (ANSINFPA 70).
- THE MAXIMUM NONHAZARDOUS LOCATION VOLTAGE MUST BE NO GREATER THAN 250V RMS.

CLASS 1, DIVISION 1,
GROUPS A,B,C, AND D
HAZARDOUS LOCATIONS

NON HAZARDOUS LOCATIONS



UNLESS OTHERWISE SPECIFIED DIMENSIONS ARE IN INCHES FRACTIONS UNLESS OTHERWISE SPECIFIED DECIMALS 1/32 24.00 24.15		CONTRACT NO.		DATE	
MATERIAL:		APPROVAL		DATE	
DRAWN BY: BAF		CHECKED BY: ---		09/02/04	
APPROVED BY: LJM		PART NUMBER		SIZE: B	
SCALE: 1=1		CODE IDENT NO.		DRAWING NO.	
DO NOT SCALE		OHIO SEMITRONICS, INC.		B901-226	
		HILLIARD, OHIO 43026		SHEET 1 OF 1	
		CONTROL DRAWING			
		ISC-XXX			