

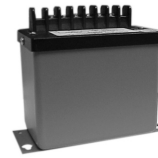
CONVERTS DC INPUT TO TIME-INTEGRATED PULSE

FEATURES

- Provides relay closure rate which is proportional to the time integral of the input signal.

APPLICATIONS

- Designed for use with DC, pulsating DC, or DC with AC components.



MODEL SELECTION

INPUT RANGE	CLOSURE RATE (COUNTS/HR.)	PART NUMBER
0 - 50mV	0 to 10000	VFC-010
0 - 100mV	0 to 10000	VFC-020
0 - 150mV	0 to 10000	VFC-030
0 - 250mV	0 to 10000	VFC-040
0 - 1mA	0 to 10000	VFC-050
0 - 10V	0 to 10000	VFC-060
4 - 20mA	0 to 10000	VFC-070
0 - 5V	0 to 10000	VFC-080

ORDERING INFORMATION

Example: 0-150mV Input, 10,000Cts/hr at F.S., 230Vac Inst. Pwr.

VFC-030-22

Custom count rates available - consult factory
Optional 230Vac Instrument Power - Add suffix "-22"

SPECIFICATIONS

INPUT

Type See Table
 Overload 10Vdc max.
 Impedance
 Voltage input models >1MΩ
 Current input models <200Ω
 Frequency dc with up to 100% ripple@120Hz or higher

OUTPUT

Relay N/O SPST, 120V, 0.5A contact rating
 Relay closure period 200ms

ACCURACY ±0.25% F.S.
 Linearity ±0.1% F.S.

INSTRUMENT POWER

Standard 85-135Vac, 50-400Hz, 3.5VA
 "-22" Option 230Vac, 50/60Hz, ±15%

TEMPERATURE

Operating Range -10°C to 60°C
 Effect ±0.5%

CASE DIMENSIONS & CONNECTION DIAGRAM

